



Shaftesbury Street, Stockton-On-Tees, TS18 3EL

This five bedroom end-terraced home, while in need of some modernisation, offers spacious accommodation and will likely appeal to an Investor.

The property provides hallway, two good size reception rooms and a 25 ft kitchen/breakfast room. To the first floor are two double bedrooms, a single bedroom, and a bathroom. The second floor includes two additional double bedrooms.

The property benefits from uPVC double glazing and gas central heating.

Externally, there is a small, enclosed front garden and an enclosed yard to the rear with a brick built storage/WC.

Situated close to the town centre, this home offers convenient access to Stockton Train Station and Durham University's Queens Campus, making it an ideal location for commuters and students alike.

£110,000



Shaftesbury Street, Stockton-On-Tees, TS18 3EL

HALL

LOUNGE

13'7" x 13'5" (4.14m x 4.09m)

DINING ROOM

14'5" x 11'7" (4.39m x 3.53m)

KITCHEN/BREAKFAST ROOM

25'7" x 9" (7.80m x 2.74m)

LANDING

BEDROOM ONE

16'7" x 13'9" (5.05m x 4.19m)

BEDROOM TWO

16'6" x 13'9" (5.03m x 4.19m)

BEDROOM FIVE

8'11" x 8'1" (2.72m x 2.46m)

LANDING

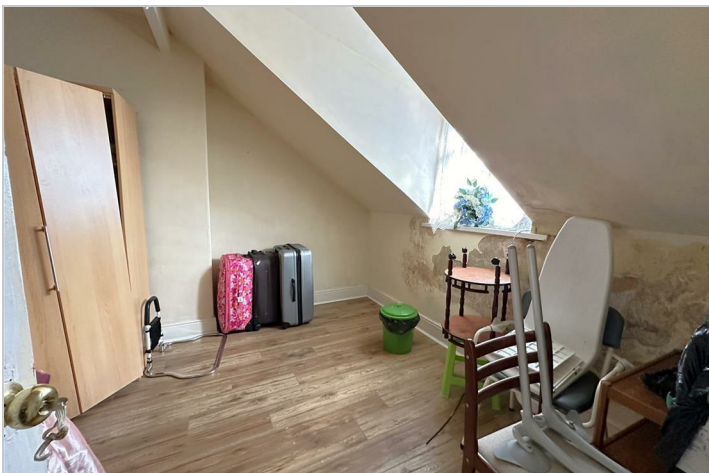
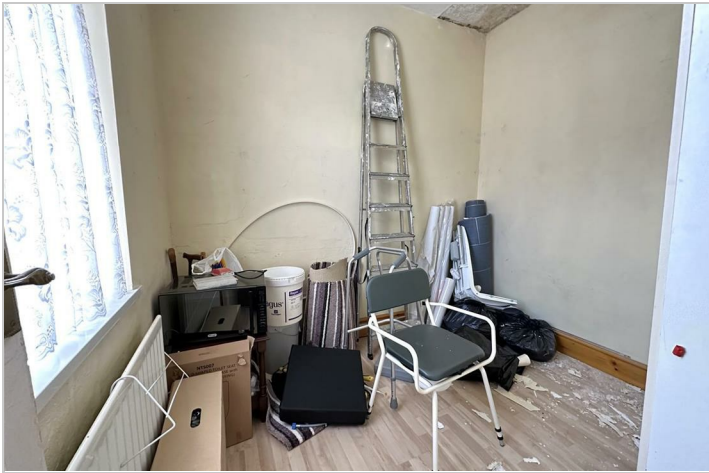
BEDROOM THREE

14'7" x 11'3" (4.45m x 3.43m)

BEDROOM FOUR

14'5" x 10" (4.39m x 3.05m)

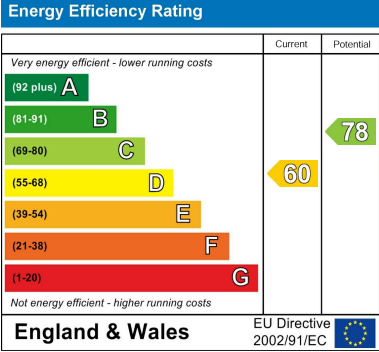




Map



EPC graph



Floor Plan



VIEWING

Please contact us on 01642 615657 if you wish to arrange a viewing or would like more information.

These particulars, whilst believed to be accurate are set out as a general outline only for guidance and do not constitute any part of an offer or contract. Intending purchasers should not rely on them as statements of representation of fact, but must satisfy themselves by inspection or otherwise as to their accuracy. No person in this firms employment has the authority to make or give any representation or warranty in respect of the property.